



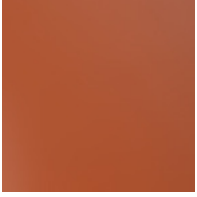
Square Wall Planter in **Cornflower** with Citrus, Terracotta, Grapefruit and Pear Snap Caps.

Designed to mix and match, **Safran Everyday's Color Pops Wall Planters** boast whimsical, modern shapes and colors. Adding the ready-to-hang, lightweight planters transform greenery into works of art while also helping to improve air quality and environmental comfort for interior spaces.

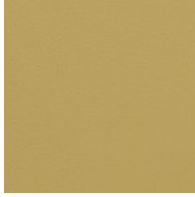
The planters' "fold-up" design minimizes material waste and eliminates welding during production. Like Safran Everyday's overall product collection, Color Pops Wall Planters are made from sustainable, low-VOC powder-coated steel.

Color Pops Planters are available in two sizes, **Square (shown here)** and Long, which feature a wavy edge design. **Snap Caps** may be coordinated to planter color or in contrasting single- or mix-hues for added visual interest. Planters are available in Terracotta, Pear, Grapefruit, and Cornflower. Snap Cap colors also include Citrus. Additional color options may be available by special order.

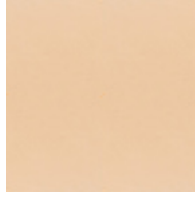
PLANTER COLOR OPTIONS:



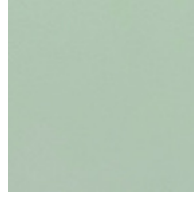
Terracotta



Pear



Grapefruit



Cornflower

SNAP CAP COLOR OPTIONS:



Terracotta



Pear



Grapefruit



Cornflower



Citrus

Declare.

Plant Holder Safran Everyday for Monmade

Final Assembly: Pittsburgh, Pennsylvania, USA
Life Expectancy: 100 Year(s)
End of Life Options: Take Back Program (Super Circularity Program), Recyclable

Ingredients:

Mild Steel CR A1008-A1011: Steel; **powder coat:** Undisclosed (0.985-0.993%); **Steel Screws - 18-8:** Steel; **Snap Caps - plastic components:** Polypropylene

¹LBC Temp Exception RL-004b - Proprietary Ingredients in Declare

Living Building Challenge Criteria: Compliant

I-13 Red List:

- | | |
|---|-------------------------------|
| <input type="checkbox"/> LBC Red List Free | % Disclosed: 99.01% at 100ppm |
| <input checked="" type="checkbox"/> LBC Red List Approved | VOC Content: Not Applicable |
| <input type="checkbox"/> Declared | |

I-10 Interior Performance: Not Applicable

I-14 Responsible Sourcing: Not Applicable

SFN-0001
EXP. 01 MAY 2024
Original Issue Date: 2023

MANUFACTURER RESPONSIBLE FOR LABEL ACCURACY
INTERNATIONAL LIVING FUTURE INSTITUTE™ living-future.org/declare

**ABOUT THE PRODUCER**

Safran Everyday was created out of artist Maia Leppo's desire to provide simple, beautiful, functional goods. Inspired by botanicals and architecture, Maia brings her fresh sense of design to practical wares like planters and wall hooks. Designed to mix and match, Safran Everyday's **Color Pops Wall Planters** boast whimsical, modern shapes and colors. Adding the ready-to-hang, lightweight planters transform greenery into works of art while also helping to improve air quality and environmental comfort for interior spaces.

SUSTAINABILITY INFORMATION

Meets sustainably **Monmade** Dimensions



- Woman-owned creative business with a studio at the **Brew House**, a non-profit art center on Pittsburgh's South Side. The Brew House was once a former brewery and was renovated within the last ten years, offering artist studios, lofts, and a gallery.
- Producer's primary production partners are within 300 miles of her studio, including a steel producer in Honeybrook, PA (268 miles) and a powder-coater in **Freedom, PA (50 miles)**.
- Planters are made from durable steel manufactured from recycled rather than virgin materials. Powder-coating provides a low-VOC finish.
- By using cold processes (bolts, rivets, or fasteners) instead of welding for production, producer helps reduce materials or other manufacturing processes harmful to human health and the environment.
- Products encourage incorporating nature into interior spaces. Plants help to clean the air naturally and provide a calming effect on occupants and visitors by offering a connection to nature.

[Learn more](#) about Monmade's holistic approach to sustainability.

MADE IN THE U.S.A.

- Produced by Safran Everyday
- Manufacturing in Pennsylvania

FEATURES & BENEFITS

- Color Pops Wall Planters are available in two sizes, including Square
- Snap Caps may be coordinated to planter color or in contrasting single- or mix- hues for added visual interest
- Planters are finished with low-VOC powder coating; snap caps are durable plastic
- Suitable for indoor applications
- Lead time: approx. 4-8 weeks

TECHNICAL INFORMATION

- Square Planter: 8"H x 8"W x 8"D
- Each planter has three key-holes for easy hanging
- Planters are available in Terracotta, Pear, Grapefruit, and Cornflower
- Snap Cap colors also include Citrus

FINISH OPTIONS

- Specify planter and Snap-Cap colors
- Upon request, producer can provide an assortment of Snap-Cap options for client choice during installation

CARE & MAINTENANCE

- Dust with soft cloth and clean with water-based cleaner as needed
- Client's installer determines hardware suitable for their application. Producer recommends brass hardware